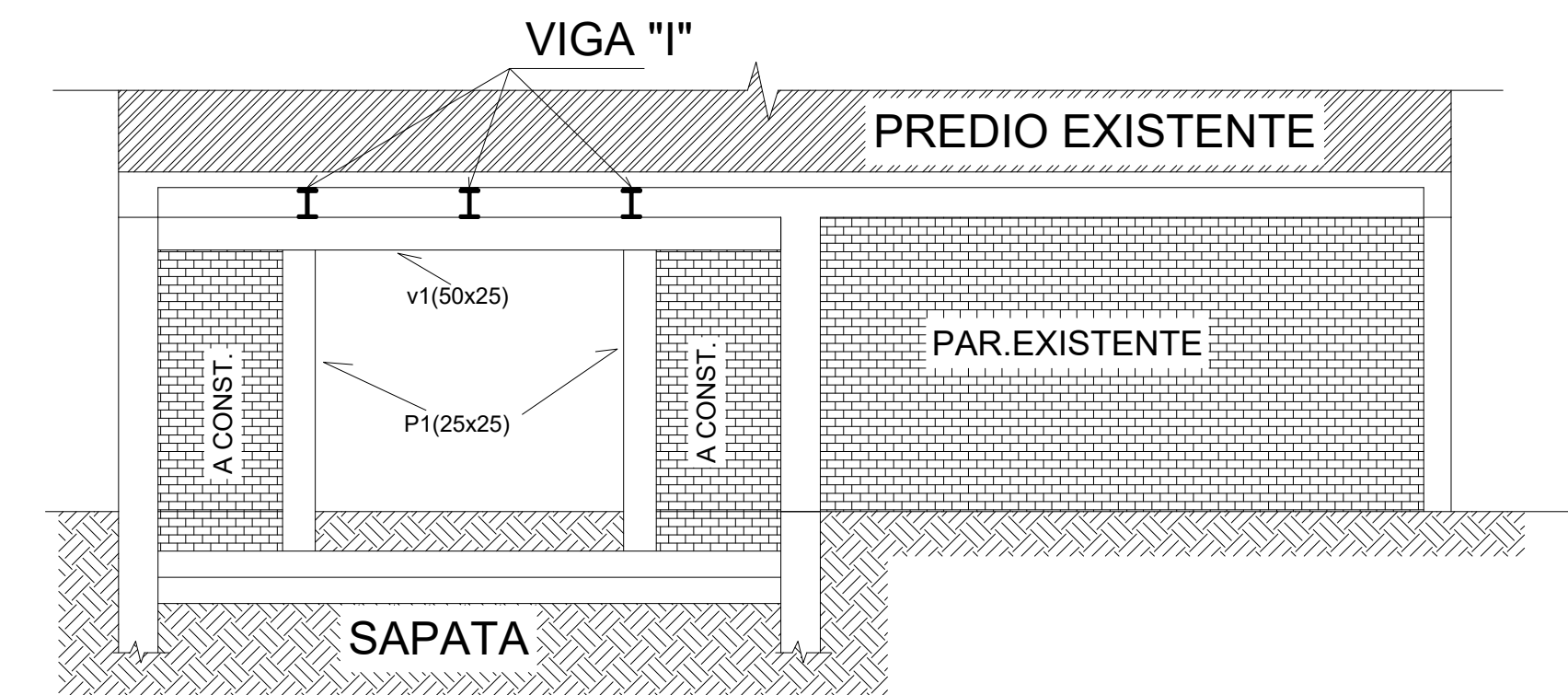
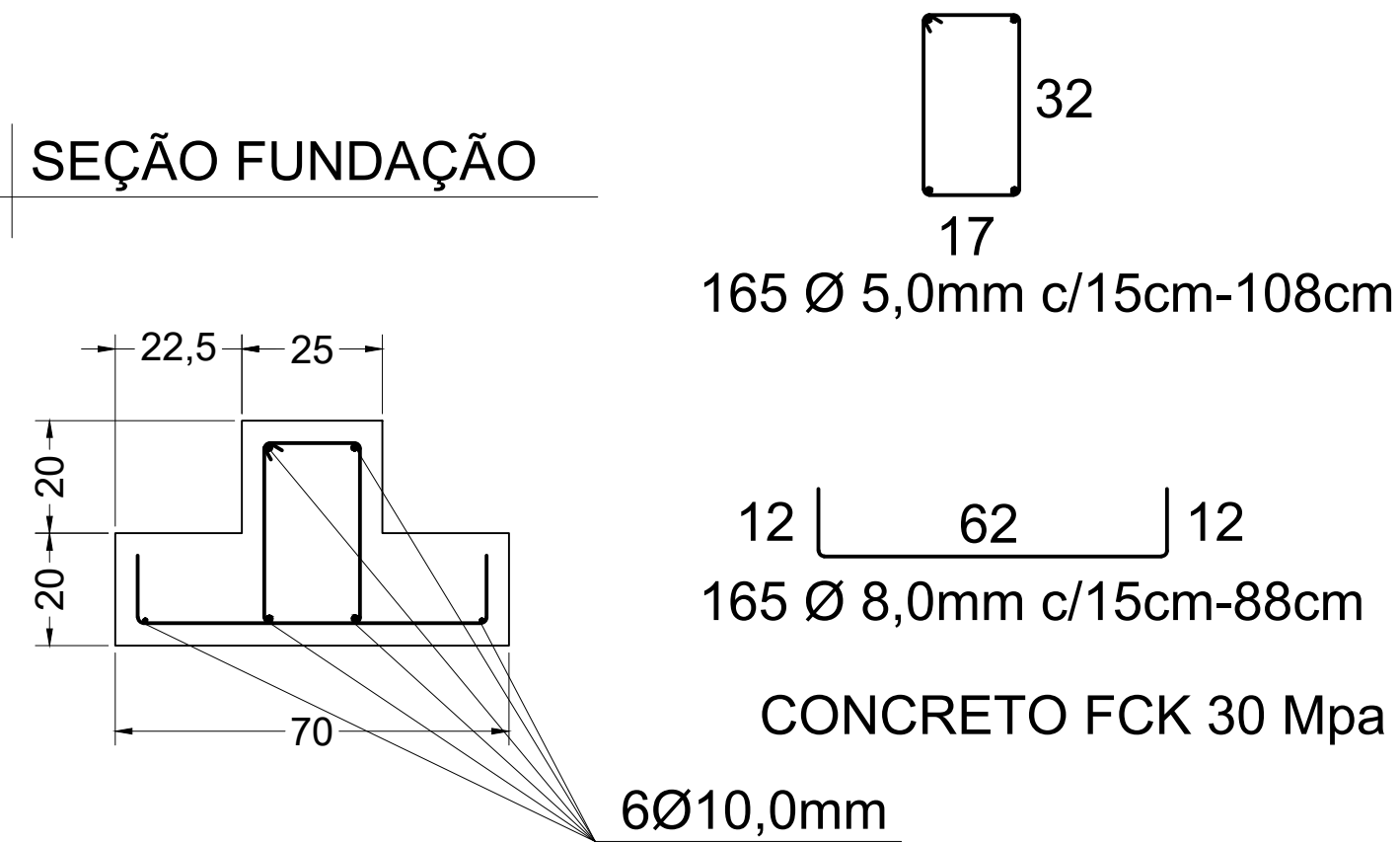


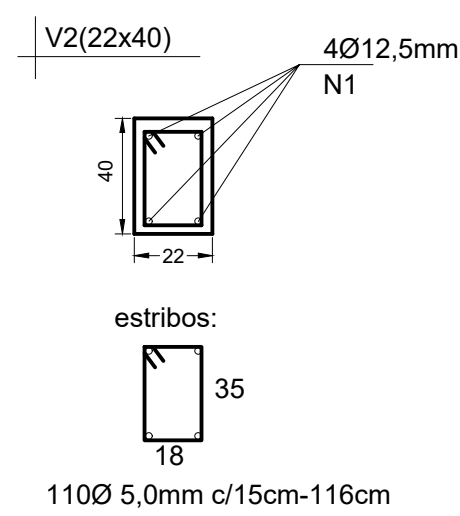
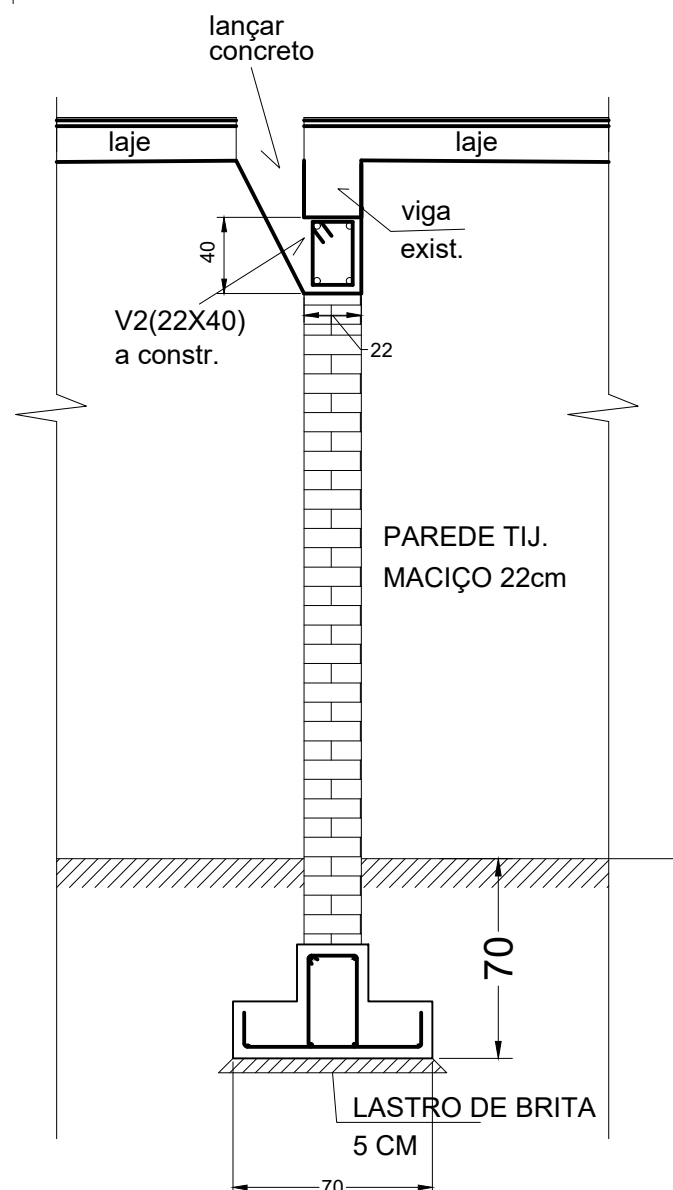
CORTE CC'

SEÇÃO FUNDAÇÃO



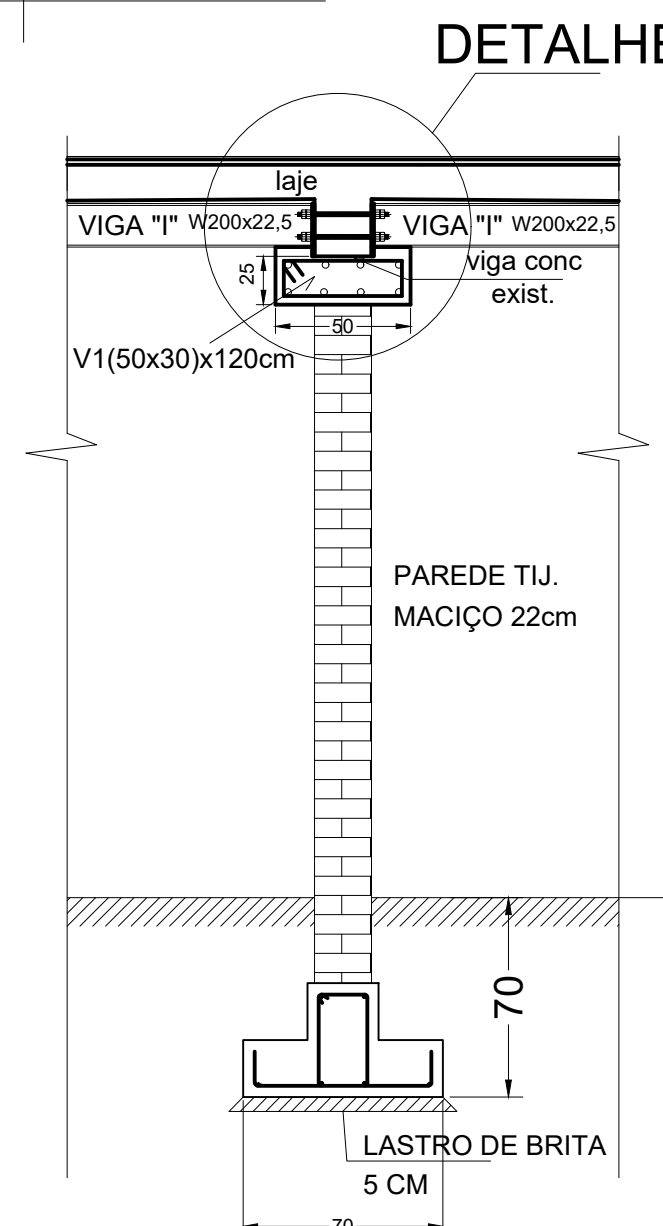
CORTE DD'

CORTE AA'

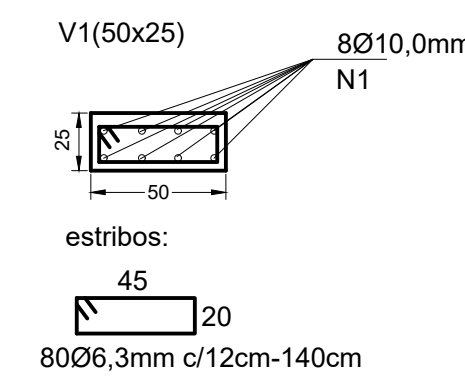


CONCRETO FCK 30 Mpa

CORTE BB'



DETALHE 1



CONCRETO FCK 30 Mpa



TEL.: (55) 99159-8247 | (55) 99164-5529 | gamazengenhariabim@gmail.com
CNPJ: 36.092.412/0001-46

PROJETO
ENDEREÇO
PASSA SETE
CLIENTE
ESTADO
RS
CIDADE
Passa Sete

RESP. TÉCNICO
Eng. Civil André Schiefelbein
CREA-RS 93.879

ÁREA TOTAL:
DATA
JUNHO/2021
ESCALA
INDICADA
FOLHA
04