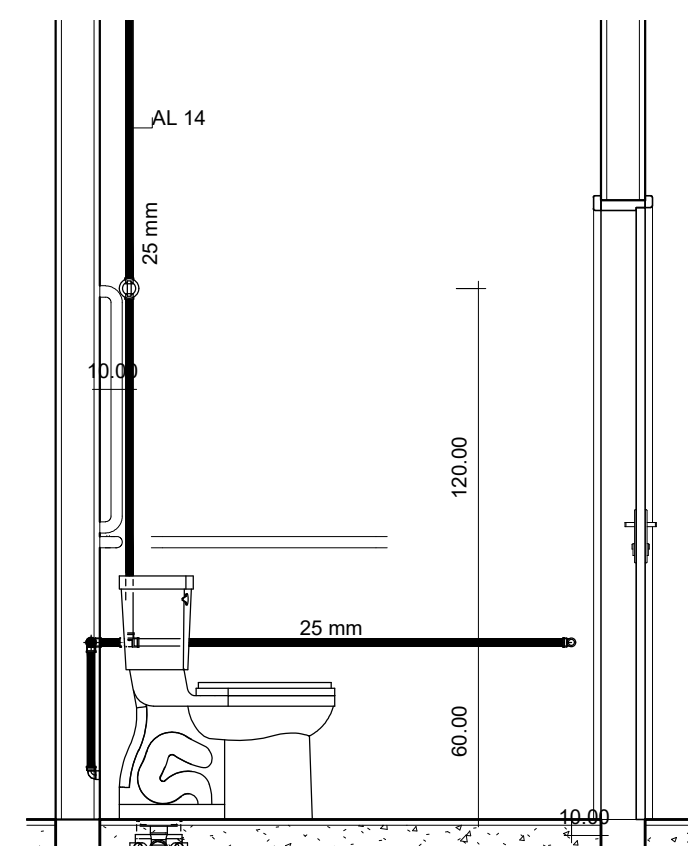
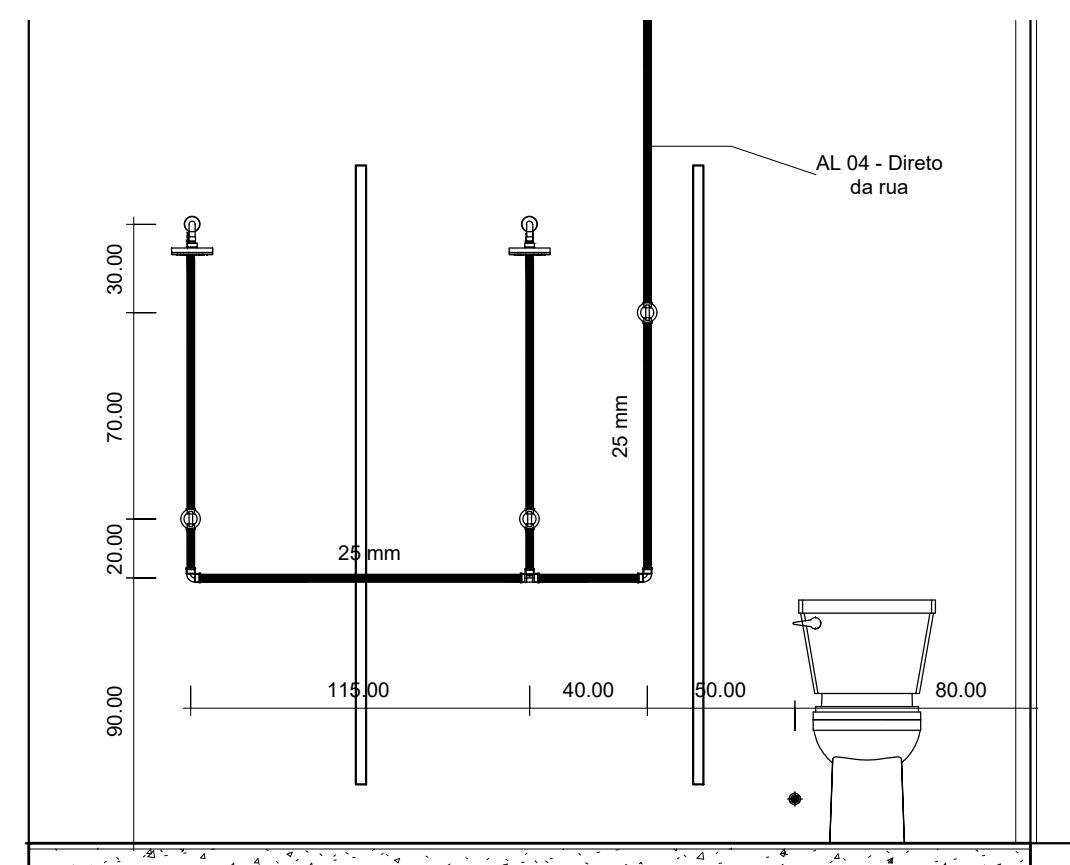


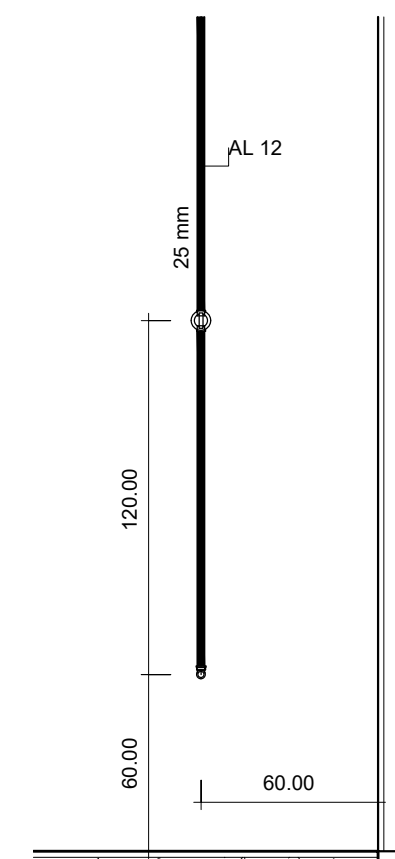
16 Masc. Vest. Chuvei.
1 : 25



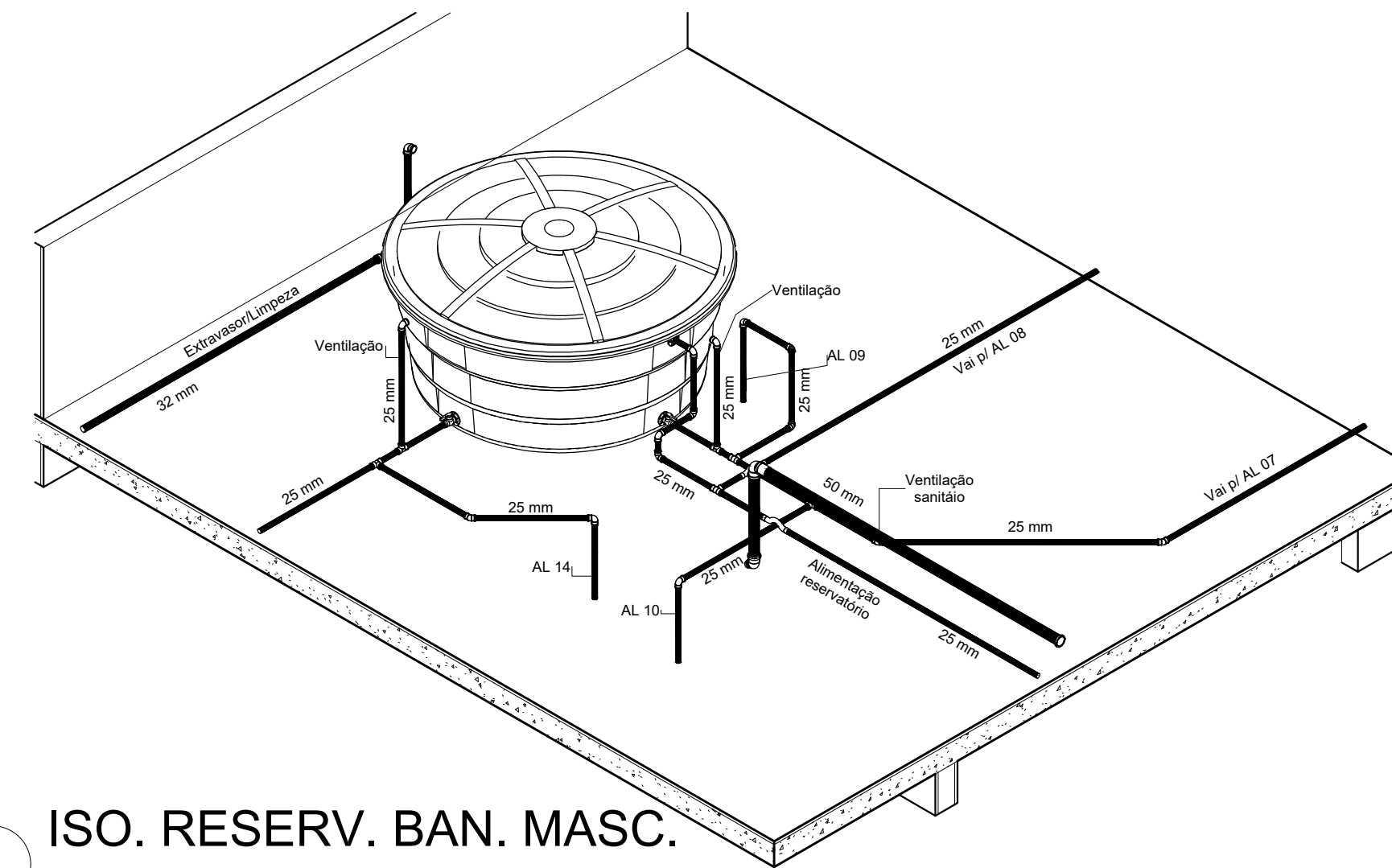
13 Masc. Ban. ACESSI. 02
1 : 25



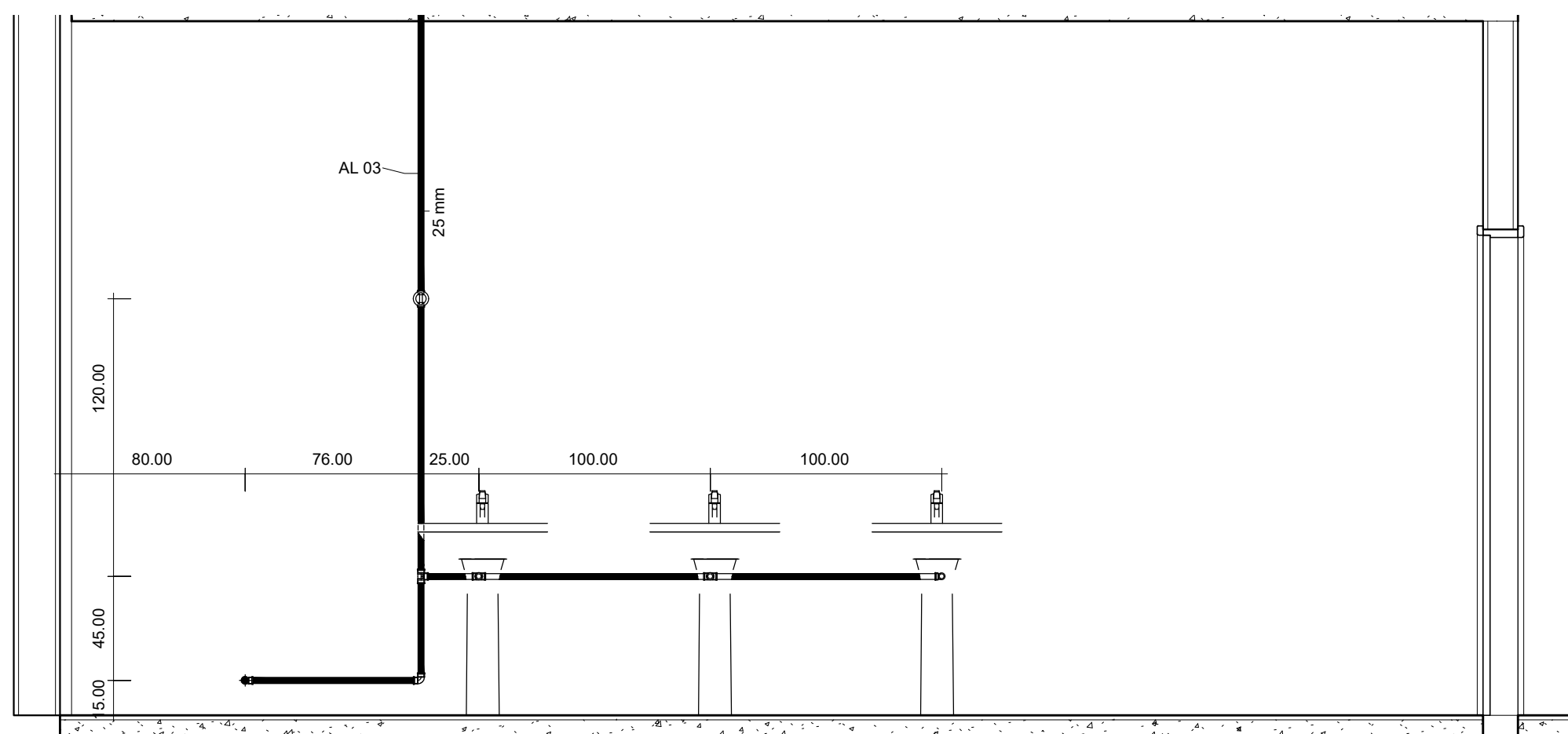
9 Fem. Vest. Chuvei.
1 : 25



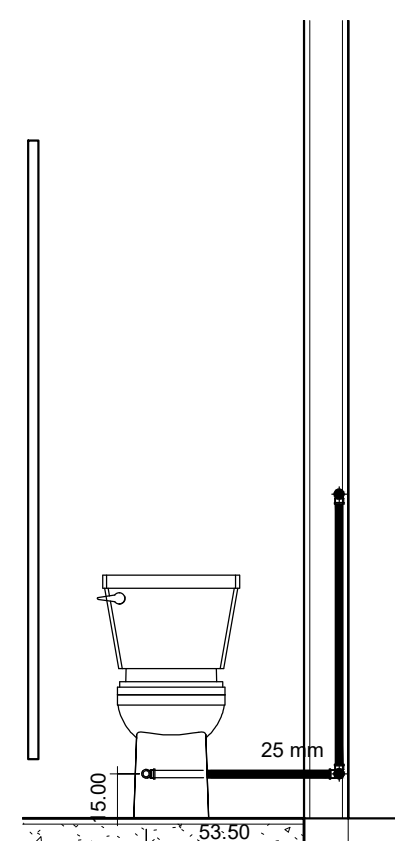
22 Copa
1 : 25



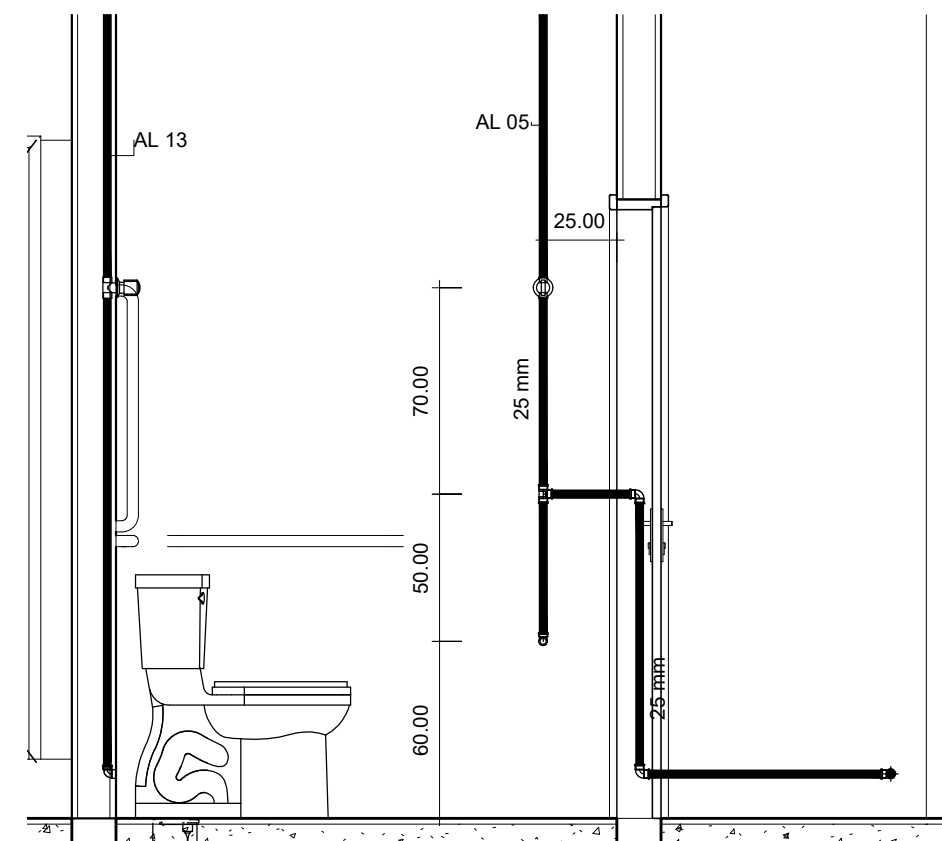
4 ISO. RESERV. BAN. MASC.



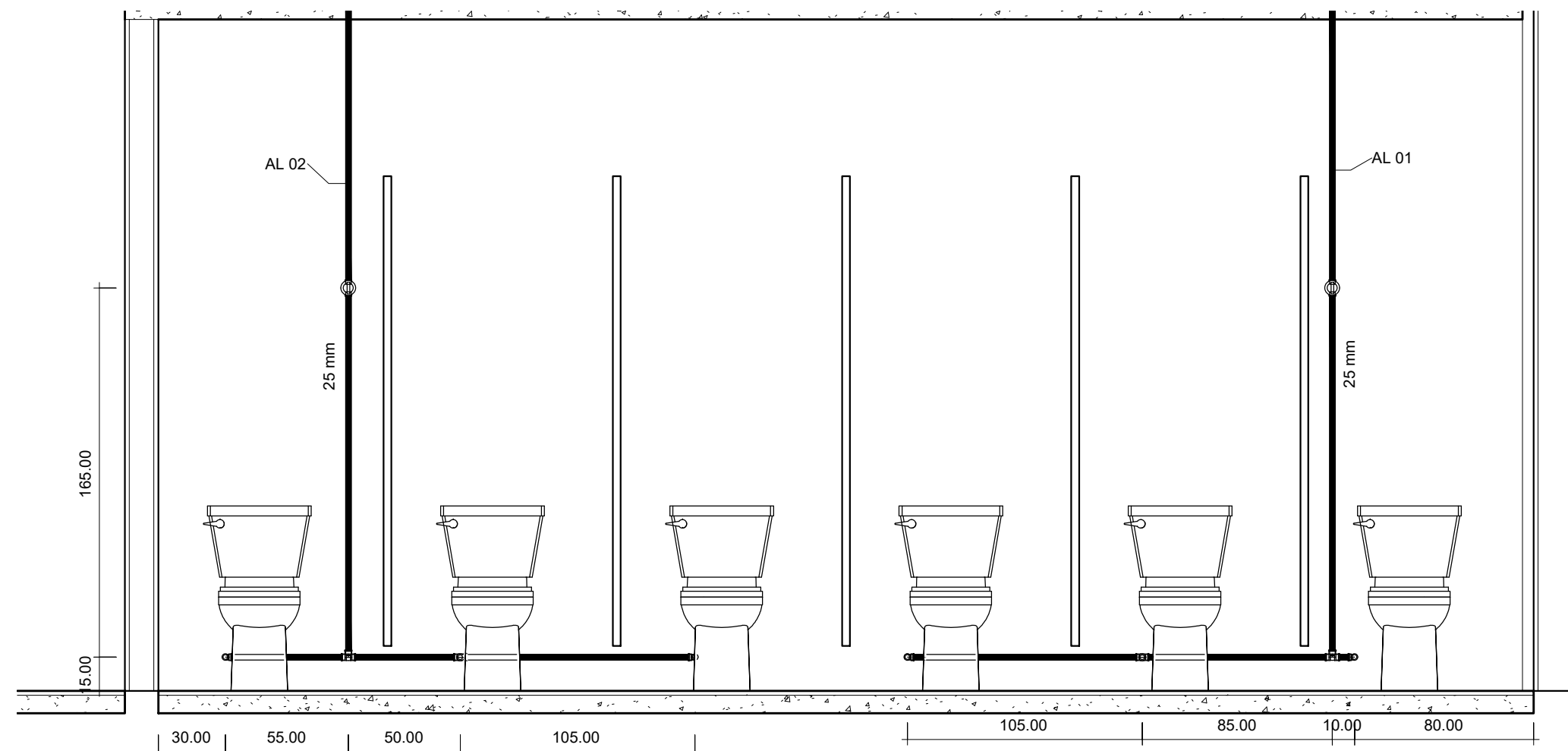
7 Fem. Ban. Lavat.
1 : 25



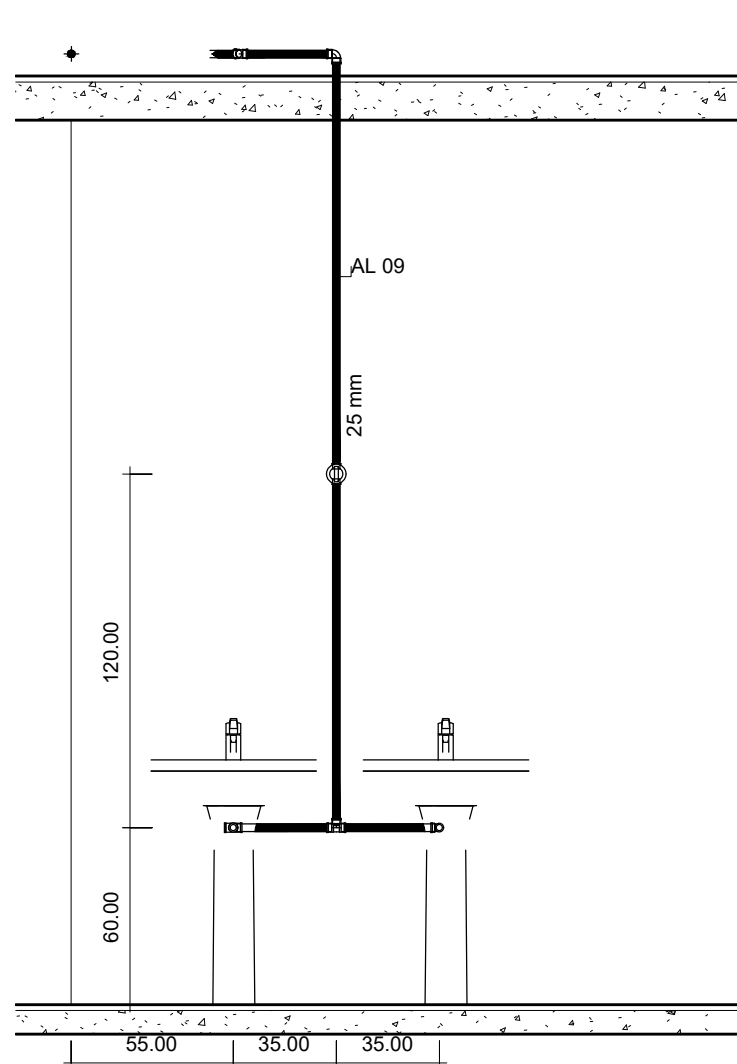
11 Fem. Vest. Sanit.
1 : 25



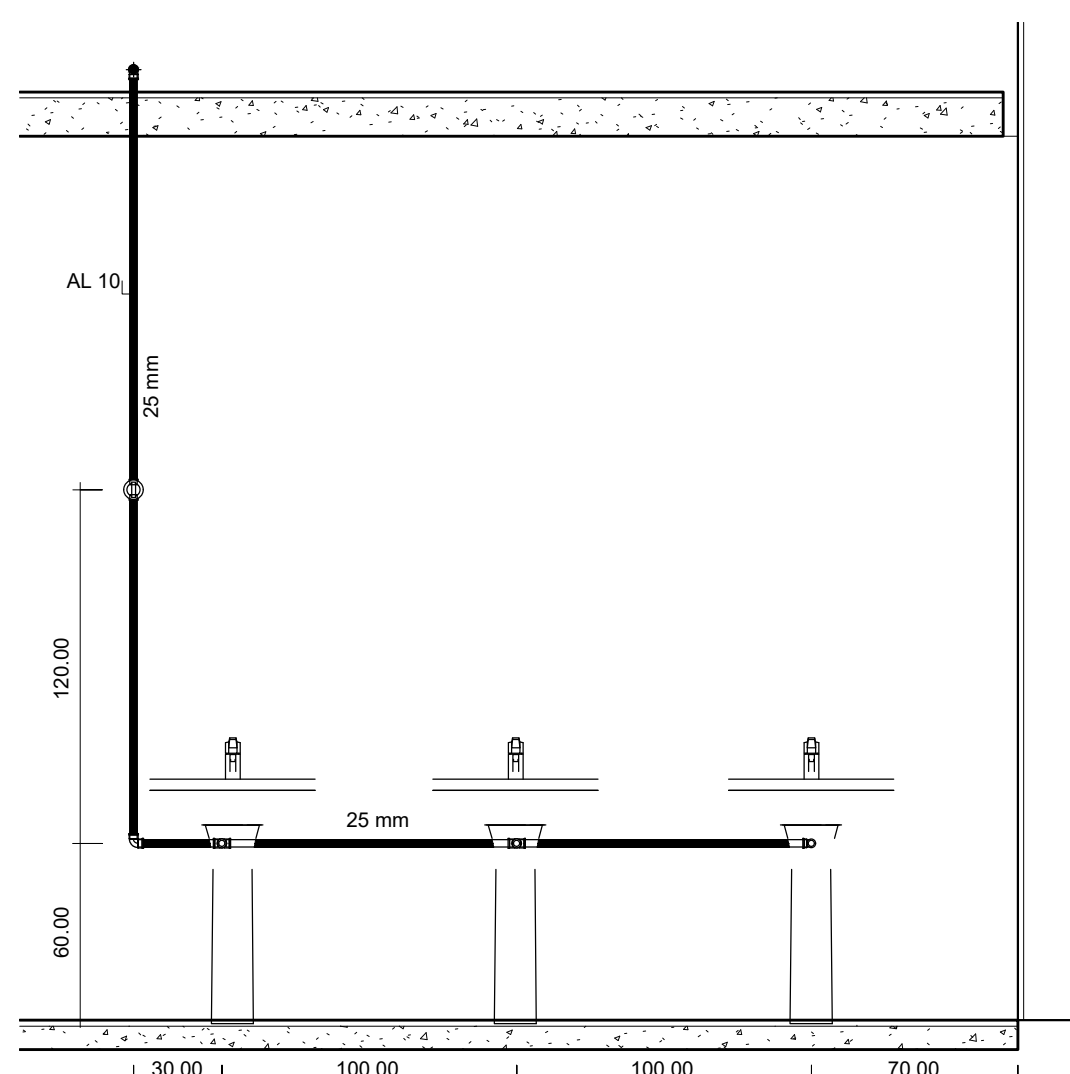
5 Fem. Ban. ACESSI. 01
1 : 25



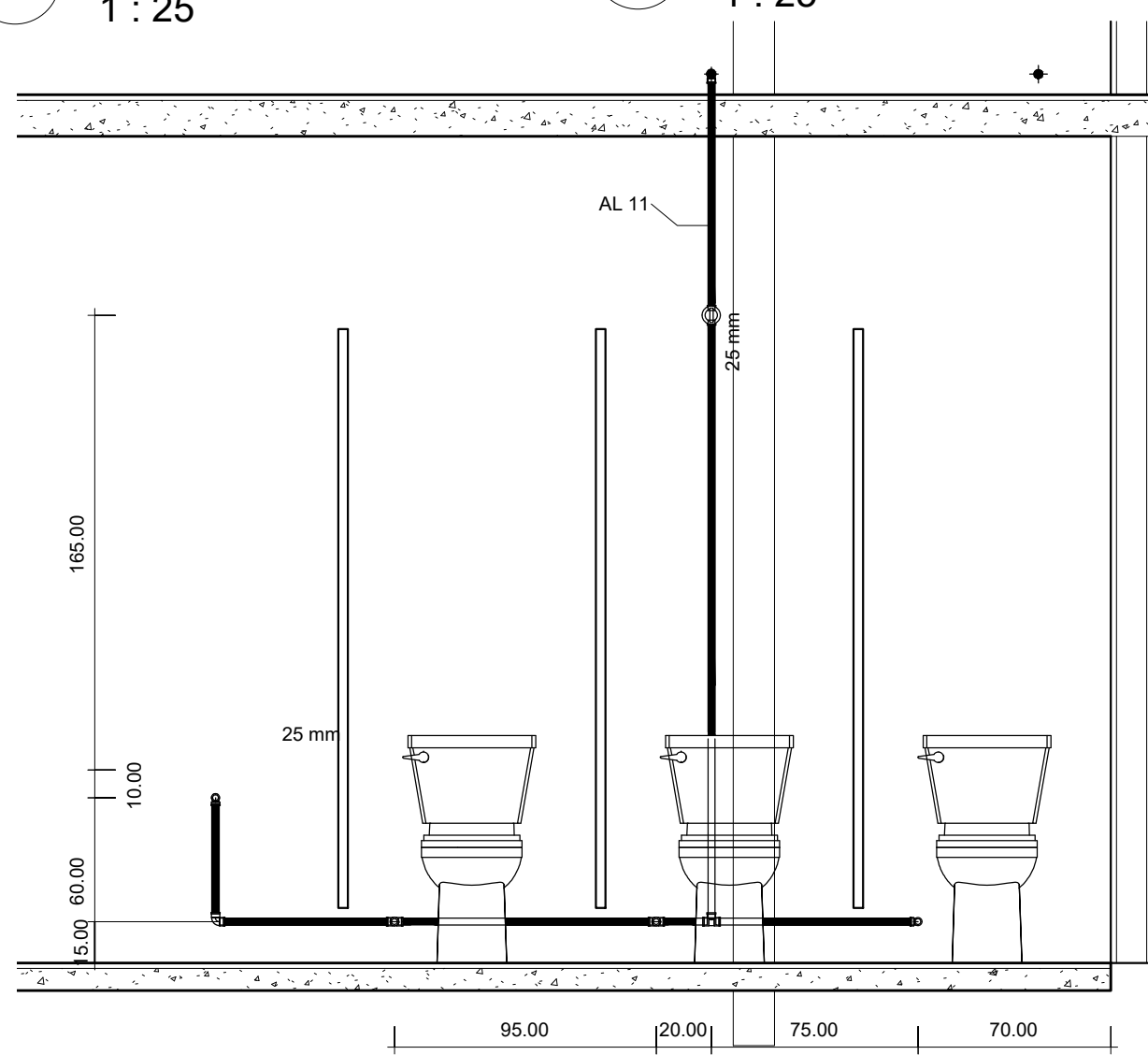
8 Fem. Ban. Sanit.
1 : 25



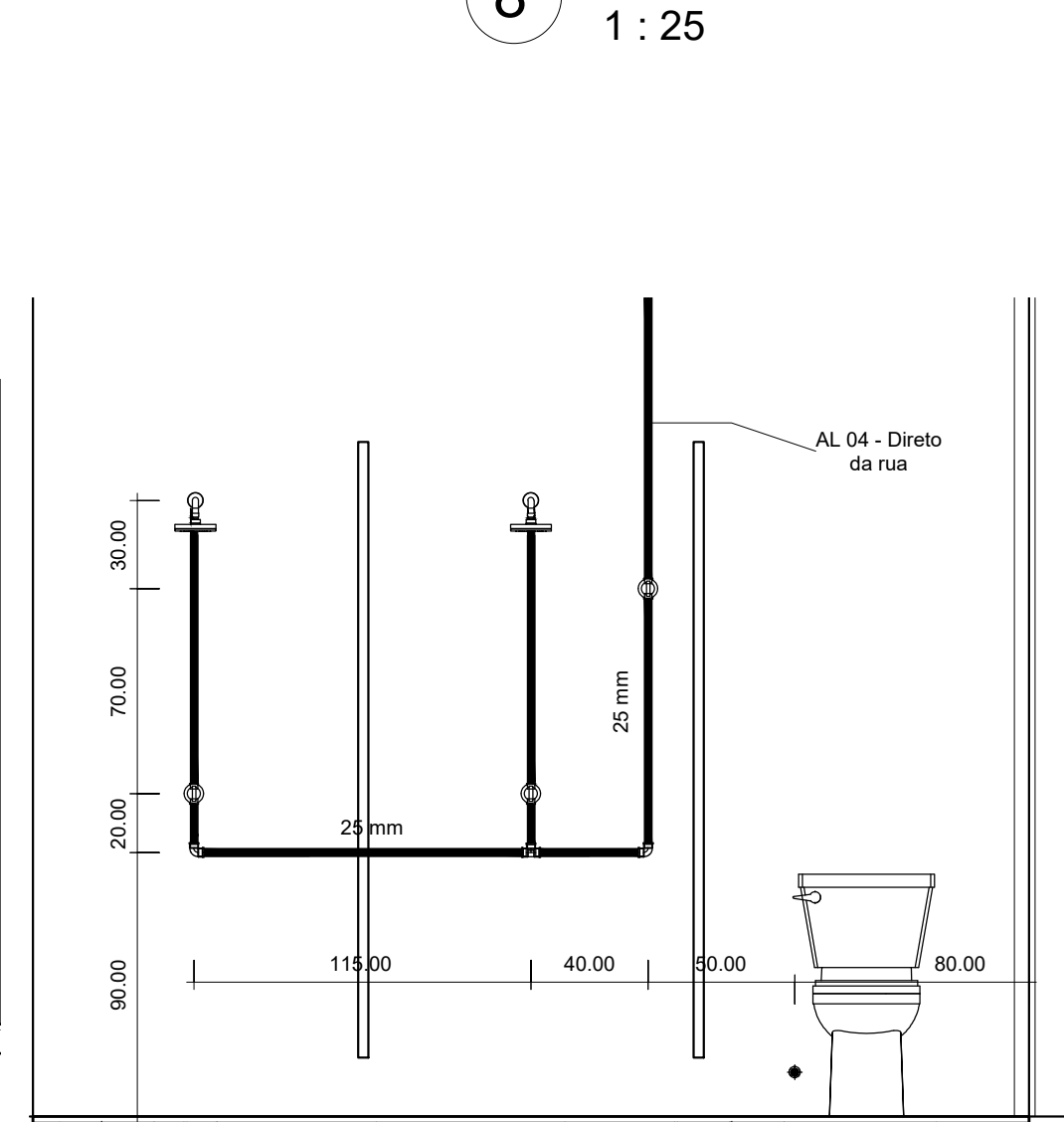
17 Masc. Vest. Lavat.
1 : 25



14 Masc. Ban. Lavat.
1 : 25



15 Masc. Ban. Sanit.
1 : 25



9 Fem. Vest. Chuvei.
1 : 25

PREFEITURA MUNICIPAL DE PASSA SETE - RS

CONCLUSÃO DO GINÁSIO DO PINHÃO

ENDEREÇO: Localidade de Taipinha - Município de Passa Sete/RS;

PROPRIETÁRIO: Município de Passa Sete - Prefeitura Municipal de Passa Sete;

RESPONSÁVEL TOMADOR: Prefeito Municipal Bertino Rech;

RESPONSÁVEL TÉCNICO (PROJETO): Eng.ª Marlusa de Souza;

Proprietário / Tomador: Bertino Rech- Prefeito Municipal

Responsavel Técnico (Projeto)- Marlusa de Souza CREA/RS: 240811

HIDRÁULICO

PROJETO HIDRÁULICO

02

DATA:

OUTUBRO/ 2019

ESCALA:

INDICADAS

DESENHO:

ENGº ROBERTO SETTI

ÁREA EXISTENTE: 2.132,56m²
ÁREA REFORMA INTERNA:
454,45m²